

# National Wildlife Crime Unit

## Role of the NWCUC

Alan Roberts

Investigative Support Officer



uk|National Wildlife  
Crime Unit

# Where do Wildlife and Crime figure?

- Policing priorities set by Govt (eg: Drugs, Robbery, Burglary, Vehicle crime)
- Cascaded through to operational police by National Intelligence Model
- Wildlife is low priority
- Tradition – network of interested parties
- Effective for reactive and low level crime
- Ineffective on organised crime
- Need for change

# An answer

- NWCIU set up through PAW pressure followed by emergence of NWCUC in current form
- Introduction of NIM to wildlife crime
- Strategic assessment and setting of Wildlife Crime priorities

AND

- Effort to gather support and funding for Unit.

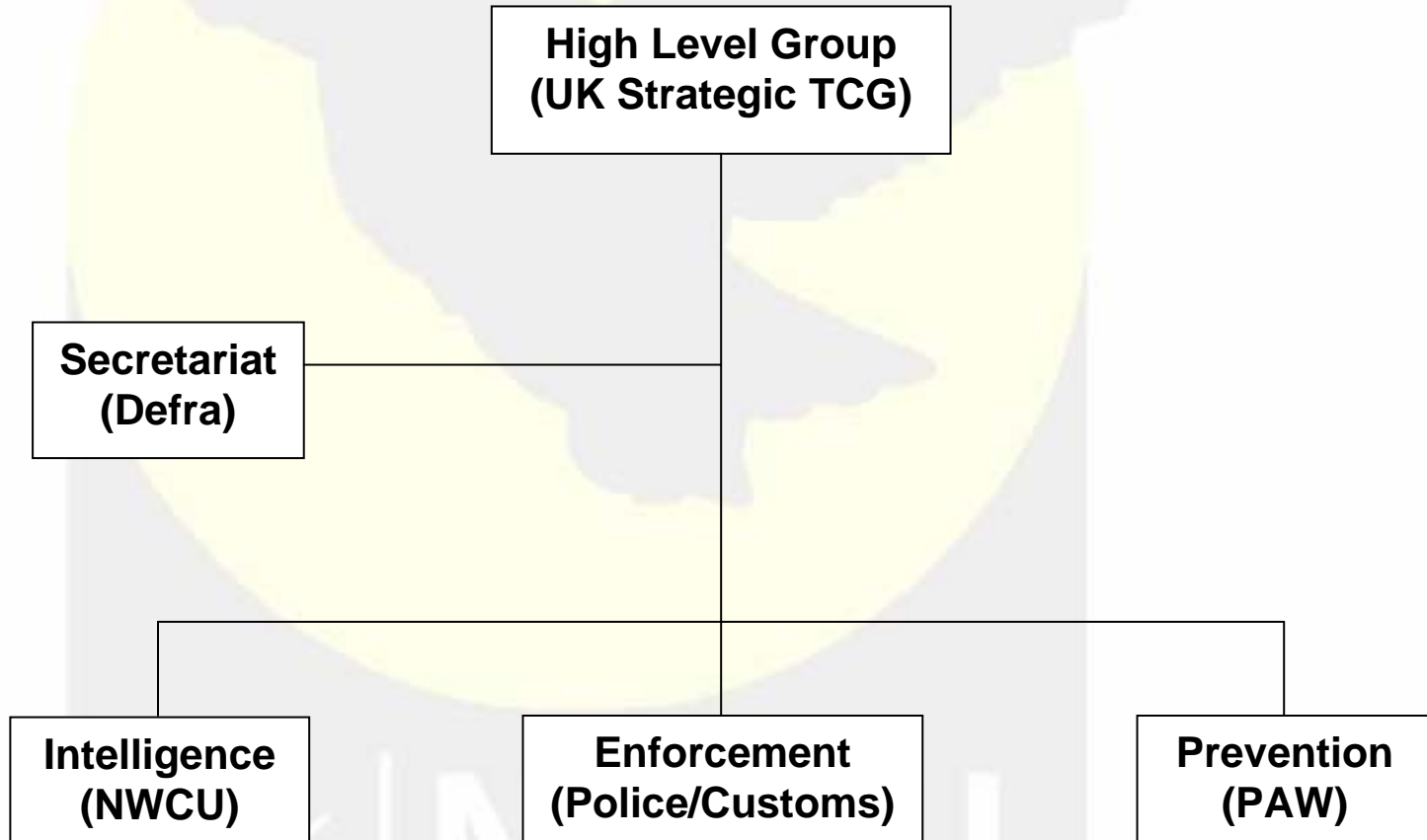
uk | NWCUC

# National Harm Reduction Strategy

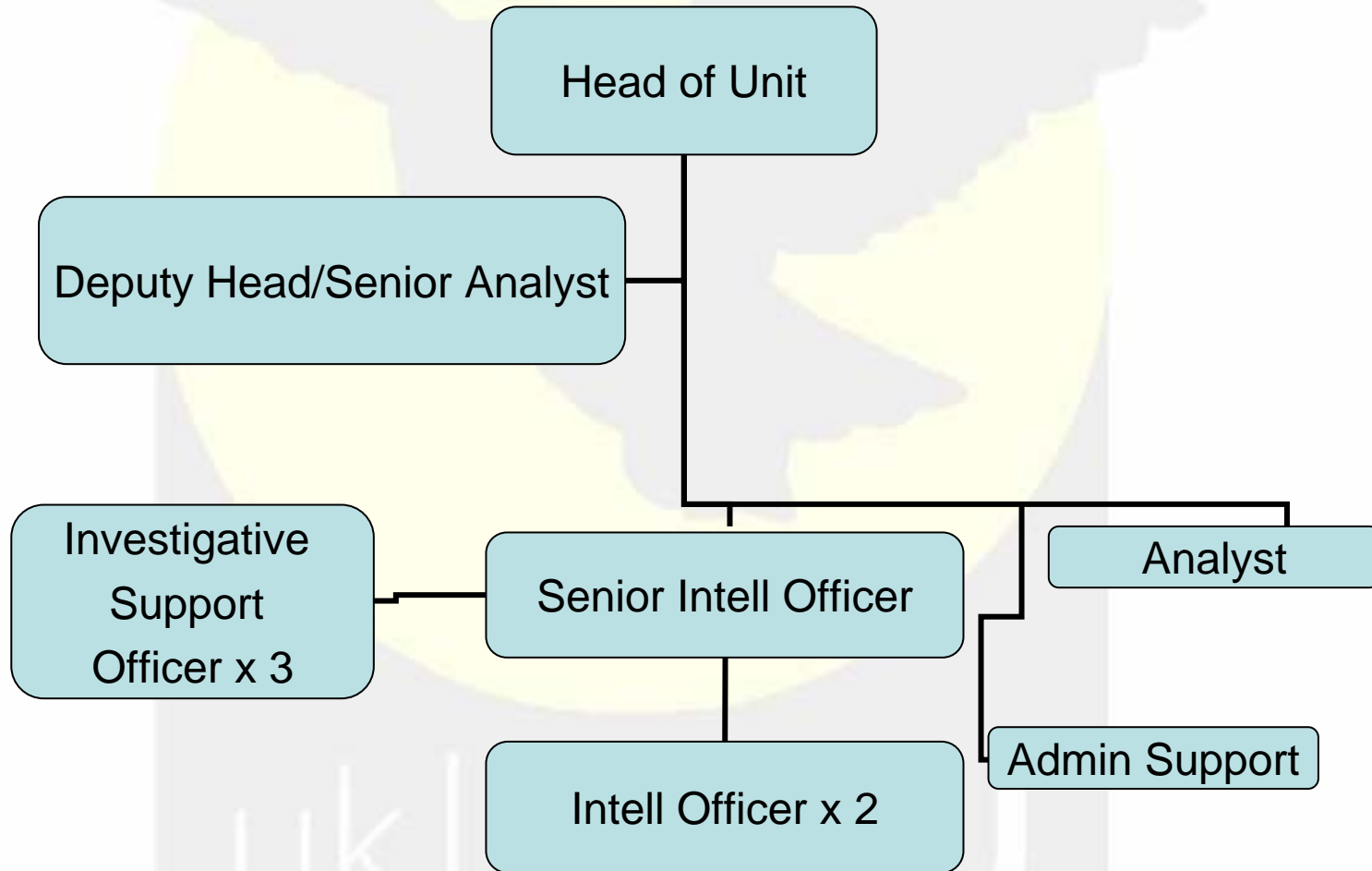
Created by High Level Group jointly chaired by ACPO/S and DEFRA

- Three distinct workstreams identified
  - Intelligence
  - Enforcement
  - Education/prevention

# Strategy chart



# What is the NWCU



# NWCU Role

- Receive and process information/intelligence reports
- Disseminate to relevant Agencies
- Produce Analytical products (NIM)
- Provide Conduit for LEA's and NGO's within UK
- Provide Conduit for International NGO's & LEA's
- Assist with investigation of wildlife crime  
through

Communication, Cooperation and Coordination

uk | NWCU

# 2007 / 2008 UK Wildlife Crime Priorities

1. Bat Persecution
2. CITES Endangered species:

- Ivory
- Traditional Medicines
- Caviar
- Tortoises
- Ramin Timber

3. Freshwater Pearl Mussels
4. Hen Harrier Persecution
5. Poaching

- Fish
- Deer
- Hare Coursing



# 2007 / 2008 Intelligence Requirements

1. Badger Persecution
2. Wild Bird Egg Collecting
3. Finch Trapping
4. Poisoning
5. Raptor Persecution



# 2009/2010 UK Wildlife Crime Priorities

1. Bat Persecution



2. Badger Persecution



3. CITES Endangered species:

(Caviar, Ivory, Ramin Timber, Tortoises, Traditional Medicines)



4. Freshwater Pearl Mussels



5. Raptor Persecution:

(Golden Eagle, Goshawk, Hen Harrier, Red Kite and White-Tailed Eagle)



6. Poaching:

(Fish and Deer Poaching/Coursing and Hare Coursing)



# 2009/2010 Intelligence Requirements

1. CITES - Annex A Orchid Species
2. European Eel Poaching
3. Finch Trapping
4. Illegal taking of Wild Bird Eggs



# What has this change achieved?

- A more credible and professional product
- Closer links both internally and with International LEA's
- A better evidenced and accurate picture of UK wildlife crime
- Establishment of a UK Wildlife Crime database
- Ability to identify links with organised crime
- More cases being investigated/prosecuted

# Thank you

Head of Unit – Brian Stuart  
Telephone: 01620 890714

Investigative Support Officer  
Alan Roberts 07884 116749  
[alan.roberts@nwcu.pnn.police.uk](mailto:alan.roberts@nwcu.pnn.police.uk)

Unit office  
Telephone: 01620893787

**[ukwildlifecrime@nwcu.pnn.police.uk](mailto:ukwildlifecrime@nwcu.pnn.police.uk)**